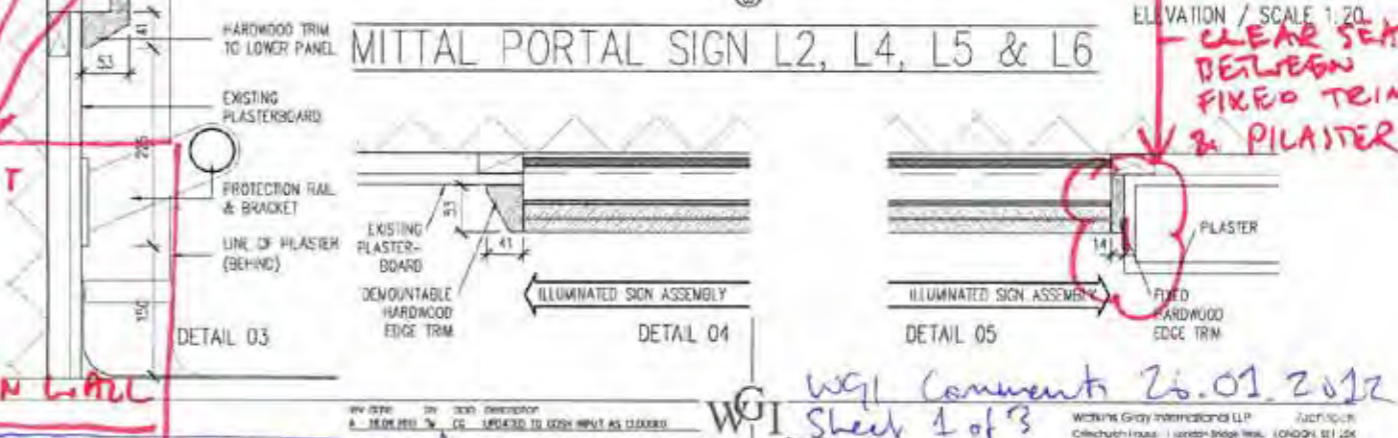
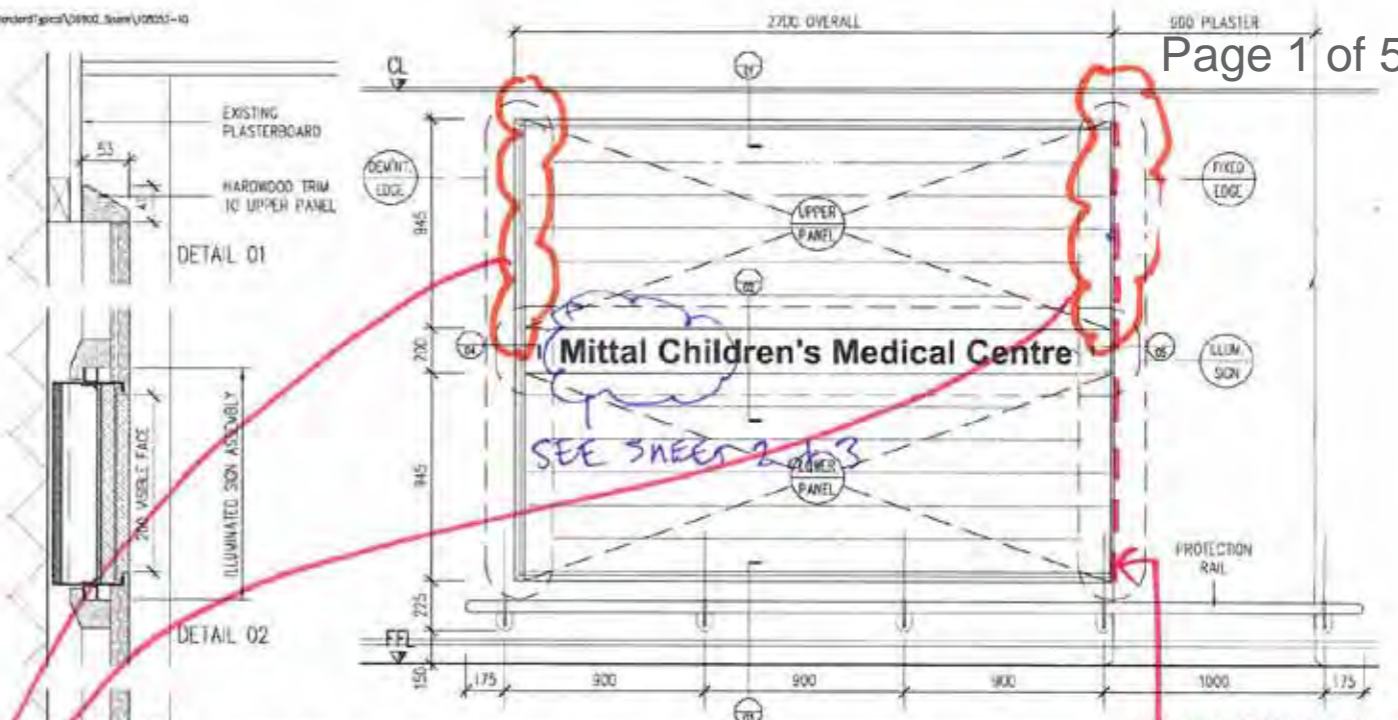


PLANNING PROJECTS\_2008\PROJECTS\_10\_VCB Street\Drawings\01\_Signs\0200\_Standard\Signs\0200\_Signs\10052-10\_SIGNING  
DATE PLOTTED: 26.09.2011 05:03 PM BY: tom matthew ARCH (2007180194)

MITTAL PORTAL SIGN COMPONENTS

REF.	DESCRIPTION
ILLUM. SIGN	ILLUMINATED SIGN WITH FLAT, EVEN SURFACE BEHIND ILLUMINATED SIGN. DIMENSIONAL LED LIGHT SOURCE, COLOURED DIFFUSER LAYER (OPTIONAL GREEN BACKGROUND), 1.5mm THICK BRUSHED STAINLESS STEEL TEXT BEHIND 20 LAYERS 1.5mm CLEAR ACRYLIC. COMPLETE WITH CASING HAVING MOON FIXINGS TO SPLIT INTERFACES WITH SURROUNDING TIMBER ELEMENTS. COMPLETE SIGN ASSEMBLY TO BE FULLY DEMOUNTABLE. TEXT TO BE SET OUT EXACTLY AS SHOWN, BEING APPROX 20% 'MIRAL' HEIGHT FROM GOLD ALL TO USE SONS LTD DETAILS
UPPER PANEL	UPPER & LOWER TIMBER PANEL SURROUND TO ILLUMINATED SIGN. FACE OF PANEL TO BE SHOWN BUT BOTH MATCHED AMERICAN WHITE WAXEN COMPOSING OF 130mm STRIPS AS INDICATED. OF BALANCED PLY BASE BOARD, OUTER EDGE TO HAVE FIXED HARDWOOD (AMERICAN WHITE OAK) TRIM AS INDICATED. INNER EDGE TO SPLIT INTERFACES WITH ILLUMINATED SIGN AS INDICATED. BOTH PANELS TO BE FULLY DEMOUNTABLE WITH SPLIT-BATTERY CONCEALED HANGERS.
LOWER PANEL	CLEAR LACQUER (10% SOLIDS) SPLIT-GUARD AC SYSTEM (20% SOLIDS) TO ALL EXPOSED SURFACES. ALL TO AVOID JOINTS TO DETAILS
DEMONT. EDGE	FULL HEIGHT DEMOUNTABLE EDGE TRIM. HARDWOOD (AMERICAN WHITE OAK) TRIM AS INDICATED. FULLY DEMOUNTABLE. FULLY CONCEALED. FULLY CONCEALED. CLEAR LACQUER (10% SOLIDS) SPLIT-GUARD AC SYSTEM (20% SOLIDS) TO ALL EXPOSED SURFACES. ALL TO AVOID JOINTS TO DETAILS
FIXED EDGE	FULL HEIGHT FIXED EDGE TRIM. HARDWOOD (AMERICAN WHITE OAK) TRIM AS INDICATED. FULLY DEMOUNTABLE. FULLY CONCEALED. FULLY CONCEALED. CLEAR LACQUER (10% SOLIDS) SPLIT-GUARD AC SYSTEM (20% SOLIDS) TO ALL EXPOSED SURFACES. ALL TO AVOID JOINTS TO DETAILS
PROTECTION RAIL	LOW LEVEL PROTECTION RAIL. BRUSHED STAINLESS STEEL LOW LEVEL, ORIGINAL SET OUT AS INDICATED. CONSTRUCTION SPECIFICS REF. LISTS, WALL FINISHES.

NOTES:  
ENSURE LEFT AND RIGHT REVEAL OF UPPER PANEL ~~THE SA IS~~ IS CONSISTENT I.E. TOP OF PANEL TO BE FIXED A LITTLE CLOSER TO MAIN WALL



108052-10-VCB STREET  
MITTAL PORTALS  
COMMENTS ON TIMBER PANEL SURROUND REVISION 2012  
SK-108052-10-20120427-TMOOD | WGI

WGI Comments 26.01.2012  
Sheet 1 of 3  
GREAT ORMOND STREET HOSPITAL  
HOSPITAL STREET UPGRADE



T C Matthew  
EXAMPLES OF WORK  
PROJECT ARCHITECT  
2008 - 2012

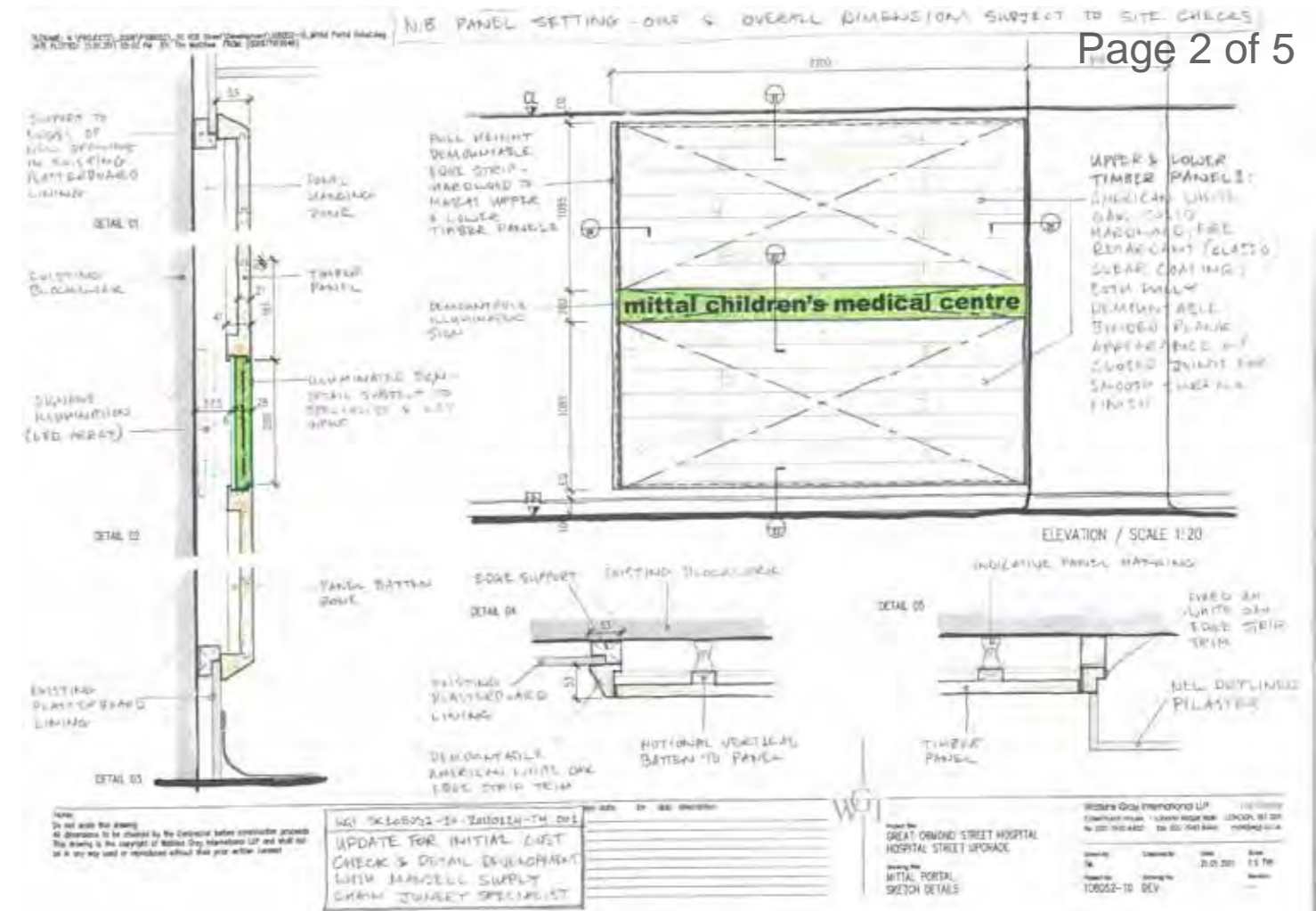
Great Ormond Street Hospital  
Variety Club Building, Hospital Street:  
Mittal Portals, upgrade and demolition interface

© Watkins Gray International LLP



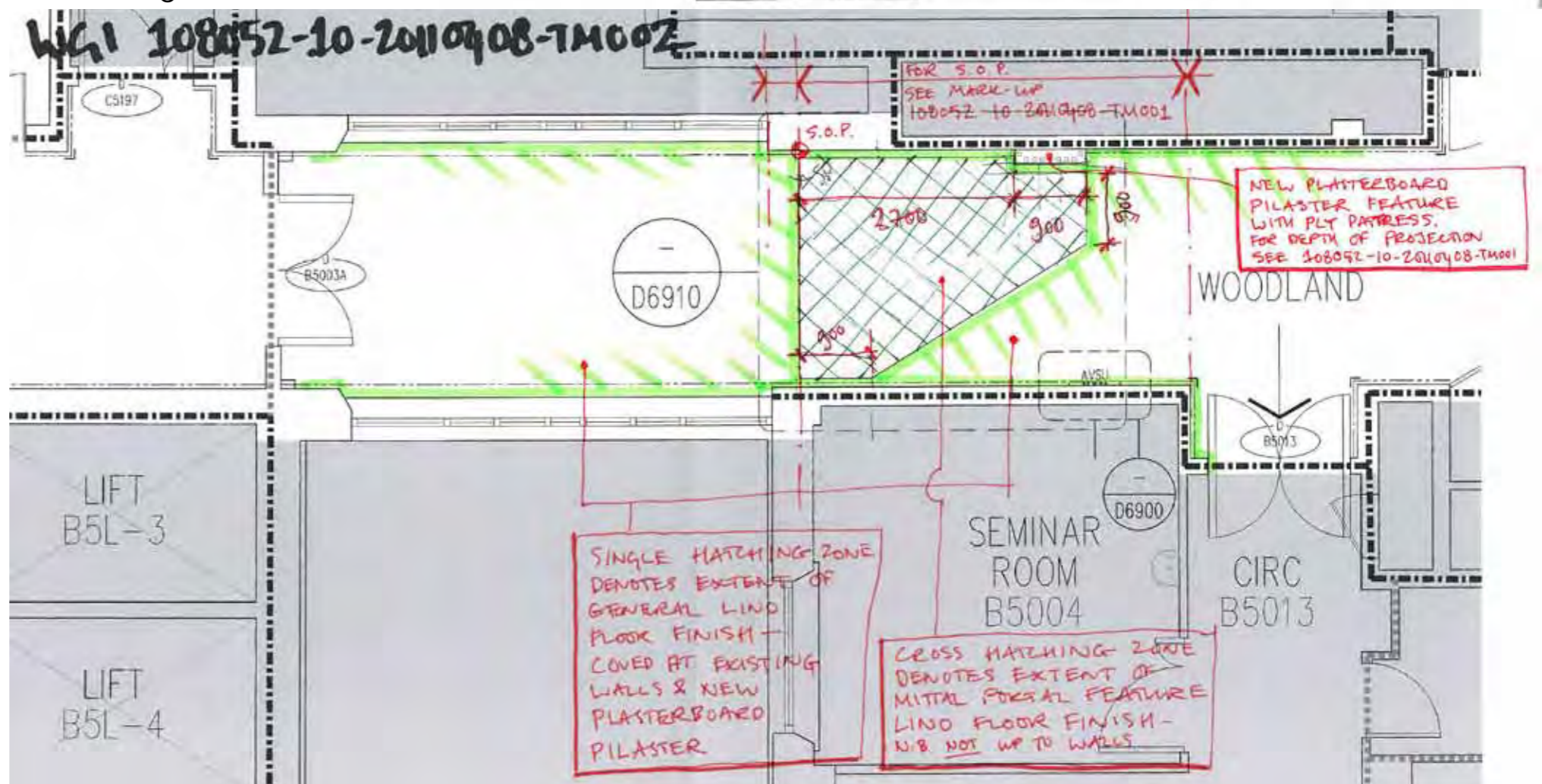


ISSUED FOR APPROVAL



108052/10.10.12.2010 VCB Hospital Street

Mittal Portals General Arrangement - View







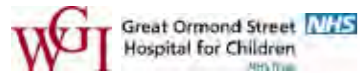
TYPICAL EXISTING MAIN LIFTS LOBBY (Level 5)



UPGRADE CONCEPT SKETCH

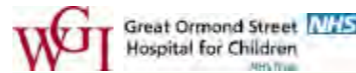
108052/10 16.05.2011 VCB Hospital Street

108052/10 16.05.2011 VCB Hospital Street

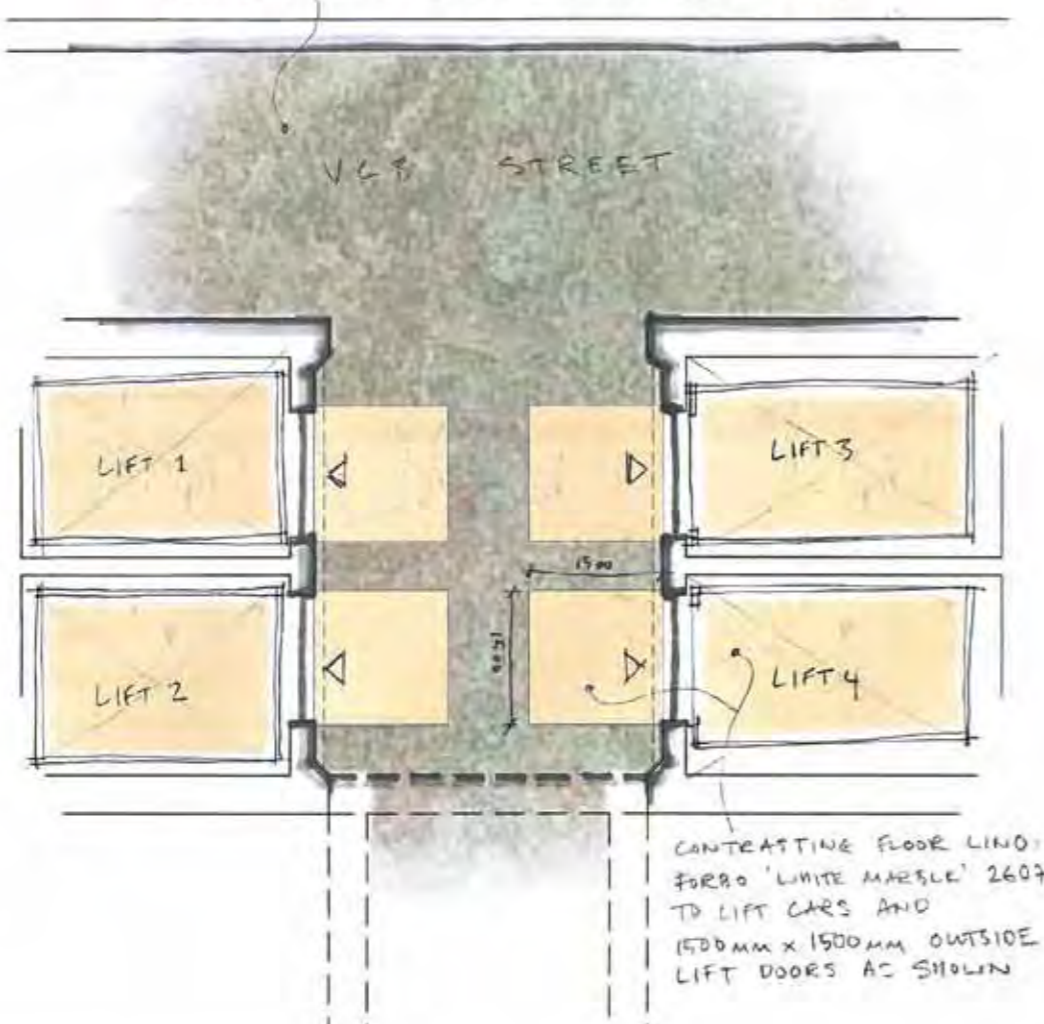


MAIN FLOOR LINO: FORBO 'ETERNAL STONE' 3183

Lift Lobby Upgrade

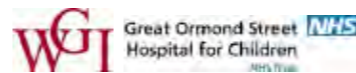


Lift Lobby Upgrade



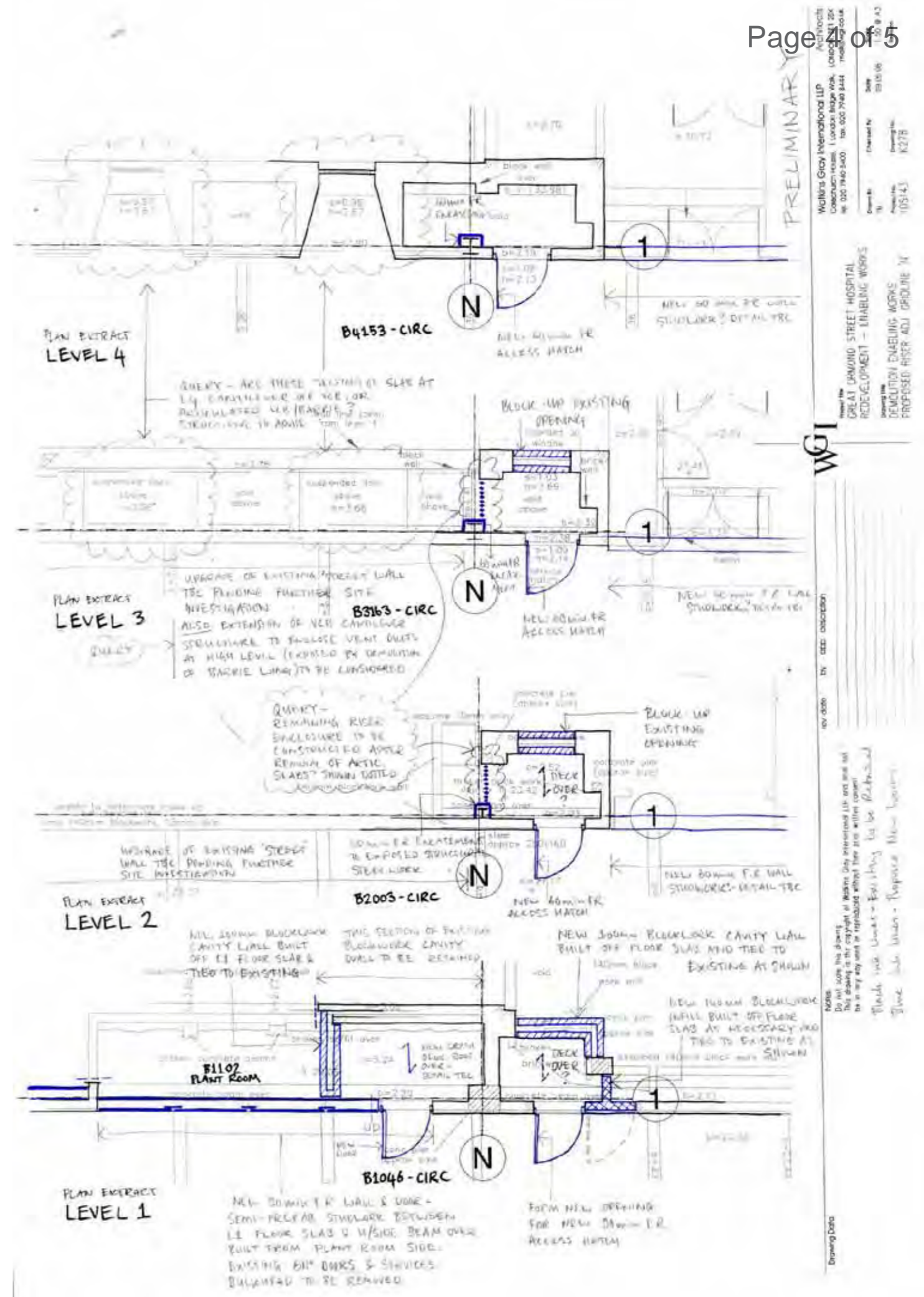
UPGRADE CONCEPT SKETCH

108052/10 16.05.2011 VCB Hospital Street

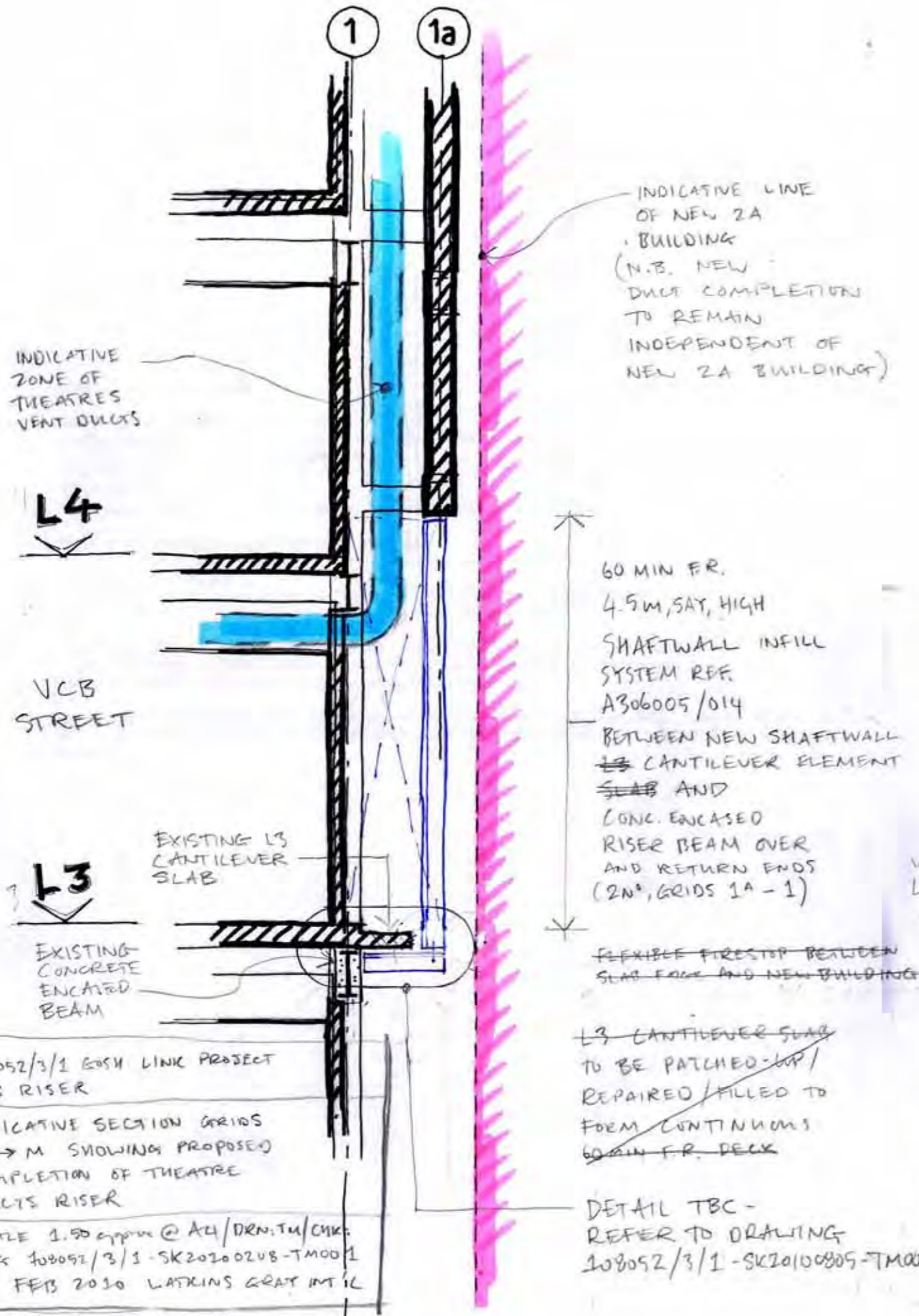


Lift Lobby Upgrade

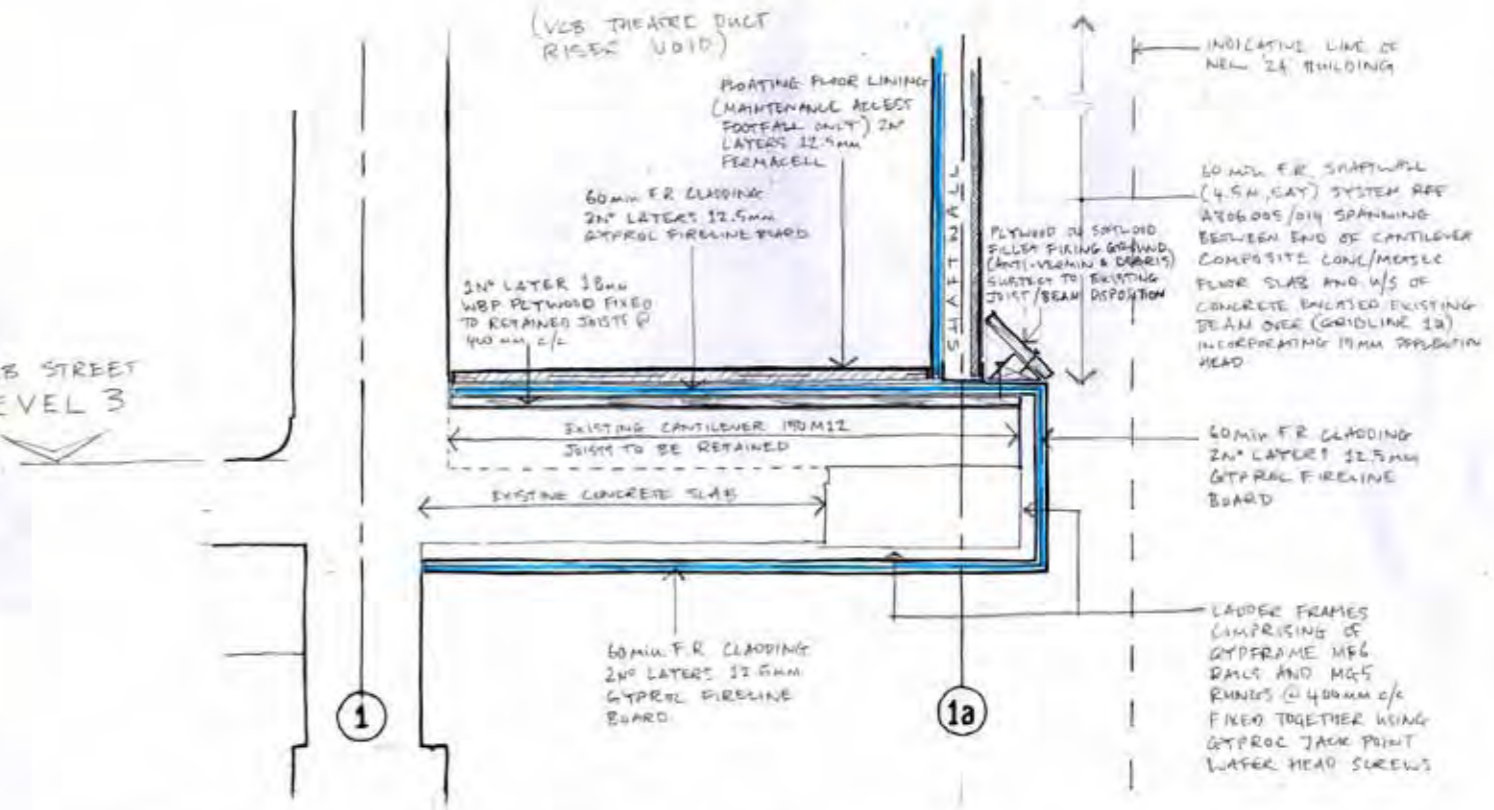








VCB STREET LEVEL 3



TYPICAL SECTION

1/5 CLADDING OF CANTILEVER COMPOSITE FLOOR BASED ON BRITISH GYPSUM BOARD REF MCE 10-532-SK1 DATED 06.08.2016